

•Visitor Information
[Museum Hours] 9:30–17:30
*Open 9:30-20:00 on Fridays only when special exhibitions are in progress, and on November 1, 2, 4.
*Open 9:30-21:00 on July 21, 28, August 4, 11, 18, 25
Please see a “Exhibition Calendar” for details.
*In all cases, admission ends 30 min. before closing.

[Closed]
Special exhibitions, thematic exhibitions: Mondays
Open on May 1, August 14
All other exhibitions: 1st & 3rd Mondays of month
*If a national holiday, open Monday and closed the following Tuesday instead.

[Entire museum closed]
1st & 3rd Mondays of month (Open when Monday is a national holiday, closed the following day instead).
Open on May 1
For reinstallation or maintenance: July 9-16, December 25, and January 11-18, 2018
Year-end Holidays: December 31 – January 1, 2018

•Facility Guide
Closed when entire museum is closed.

Library and Archives (Intercommunication Building 1F) 10:00-17:00
*Closed for maintenance: Please see a website for details.
There are a museum shop, restaurants and a cafe in the museum.
*Please see a website for details.

Official Website <http://www.tobikan.jp/en/>
Official Twitter Account [@tobikan_jp](https://twitter.com/tobikan_jp)
Facebook [TokyoMetropolitanArtMuseum](https://www.facebook.com/TokyoMetropolitanArtMuseum)

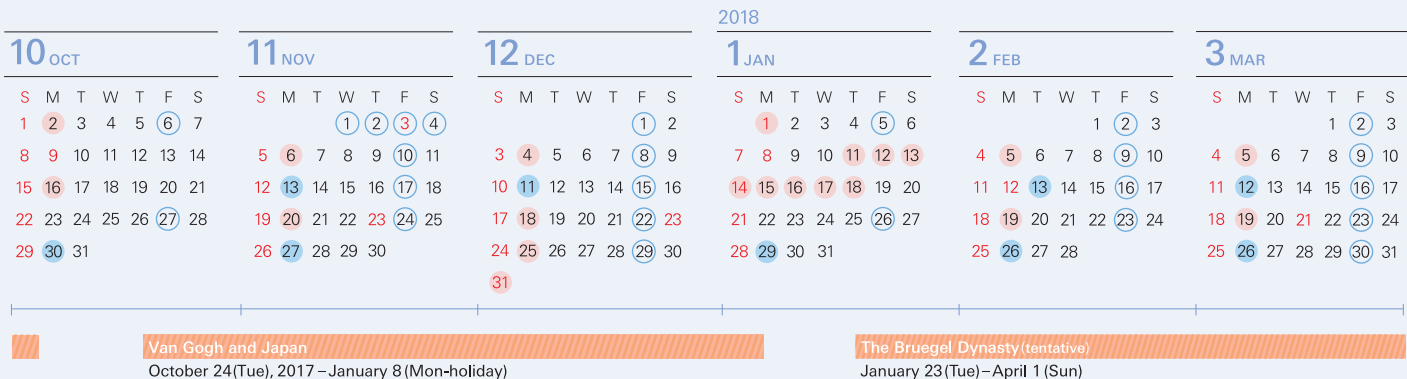
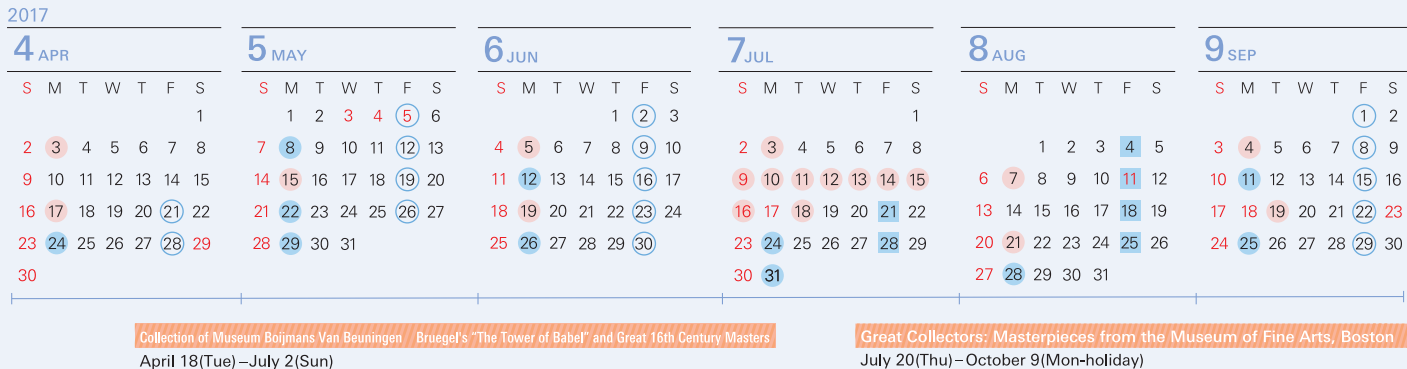
[cover] Pieter Bruegel I, *The Tower of Babel* (detail), c.1568, Oil on panel,
Museum Boijmans Van Beuningen, Rotterdam, the Netherlands

 東京都美術館
TOKYO METROPOLITAN ART MUSEUM

8-36 Ueno-Park Taito-ku, Tokyo 110-0007 Tel.03-3823-6921 <http://www.tobikan.jp/en/>

Published: March 31, 2017 Design: Kazuya Kondo Printed: SANEI PRINTERY Co., LTD.
Published: Tokyo Metropolitan Art Museum (Tokyo Metropolitan Foundation for History and Culture)
© Tokyo Metropolitan Art Museum

© Exhibition Calendar | 2017.4.1 → 2018.3.31



アート コミュニケーション プログラム

Art Communication Programs

Tokyo Metropolitan Art Museum offers a variety of participation-type programs that promote communication through art.
*Please see the museum's website for details concerning participation.



Exhibition Junior Guide

Community



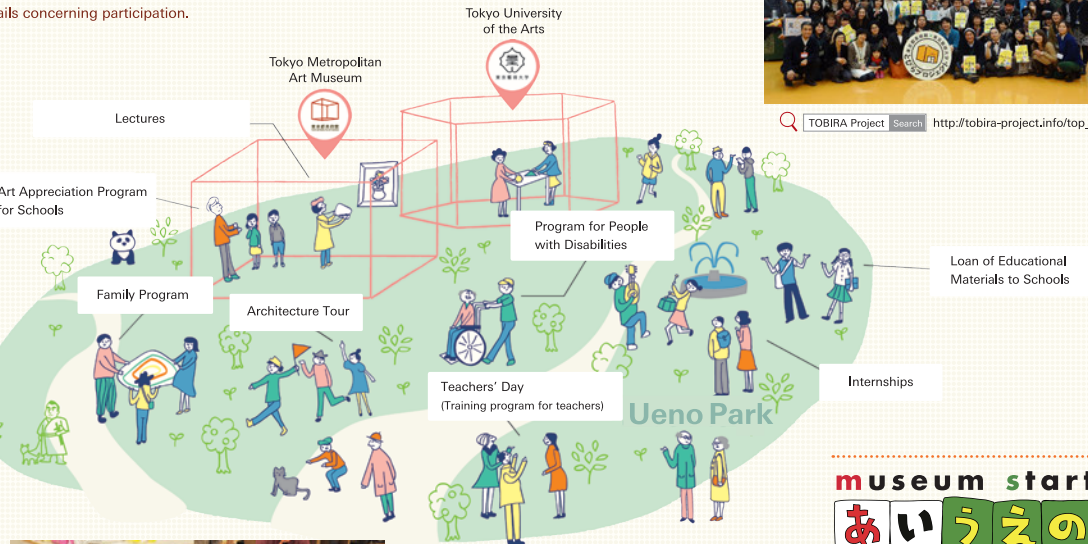
Illustrated by Mai Kuriyagawa (STUBBIE DESIGN)

Tobira Project

Operated in conjunction with Tokyo University of the Arts, TOBIRA Project is aimed at building an open community through the arts. Art communicators ("Tobira") selected through public application engage in activities with curators and university teachers, and help connect people with artworks, places, and other people.



TOBIRA Project Search http://tobira-project.info/top_e



museum start あいうえの

Within Ueno Park, "Museum Start iUeno", which aims to foster children's museum debut; and "Tobira Project", in which "Art Communicators" known as *Tobira* practice activities to revitalize communication through art.
*This project is organized as part of Arts Council Tokyo.
Organizers: Tokyo Metropolitan Government, Tokyo Metropolitan Art Museum, Arts Council Tokyo (Tokyo Metropolitan Foundation for History and Culture), Tokyo University of the Arts
<http://museum-start.jp>

ENGLISH

TOKYO METROPOLITAN ART MUSEUM | CALENDAR

2017.4 →
2018.3

◎Special Exhibition

Collection of Museum Boijmans Van Beuningen
Bruegel's "The Tower of Babel" and Great 16th
Century Masters



Pieter Bruegel I, *The Tower of Babel*, c.1568, Oil on panel, Museum Boijmans Van Beuningen, Rotterdam, the Netherlands

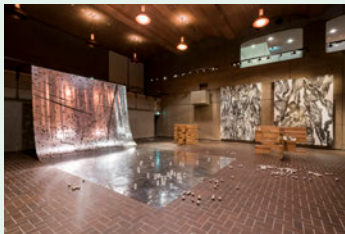
April 18 (Tue) – July 2 (Sun)

From the collection of Museum Boijmans Van Beuningen, one of the representative museums in the Netherlands, we introduce the worlds' masterpiece "Tower of Babel" by Peter Bruegel I and the works of the fantastic maestro Hieronymus Bosch, along with numerous paintings, prints, and sculptures of the 16th-century Netherlands of their day, some 90 works in total.

Group Show of Contemporary Artists 2017

June 9 (Fri) – July 6 (Thu)

To encourage contemporary artists in their pursuit of new art forms, unhindered by conventional concepts, Tokyo Metropolitan Art Museum invites artist groups to submit their own exhibition plans giving play to the unusual size and equipment of the museum galleries. In 2017, six jury-selected group exhibitions selected will be held.



sensuous structures (Installation view of Group Show of Contemporary Artists 2015)
Photo: tada (YUKAI)

1 Spirit of "North:" Sensing Faint Resonances
Group: Spirit of "North" vol.7

June 9 (Fri) – June 18 (Sun)



MARUYAMA Yoshiko,
How Can We Understand Others?, 2006
Photo : MARUYAMA Tokio

3 New Chapter of Landscape #2
-The Principles of Contemporary Landscape Photography-
Group: New Chapter of Landscape

June 9 (Fri) – June 18 (Sun)



Kohei Fukushima, *maps*, 2016

5 A space for 'encounter'
Group: Steering Committee of 'Epicurus'

June 25 (Sun) – July 6 (Thu)



Makoto Niizeki, *Where, provided the circumstances have not been altered*, 2016

2 Process of the Sea – Words' Atlas
Group: Aesthetic Life+

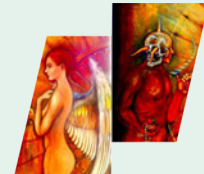
June 9 (Fri) – June 18 (Sun)



IKAWA Junko, *Babel*, 2010

4 The Disconnection -Art Movement:
An Exhibition of Simulation -Art
Group: The Disconnection -Art Movement

June 25 (Sun) – July 6 (Thu)



Masaki Hata, *in the desert /disconnection*, 2015

6 To the other side of the boundaries,
Group: "Suddenly, the view spreads out before us." planning committee

June 25 (Sun) – July 6 (Thu)



Chiaki Haibara and Ri Jong Ok, *Drawing for "A bridge striding over a fence"*, 2015

◎Special Exhibition

Great Collectors: Masterpieces from
the Museum of Fine Arts, Boston



Kitagawa Utamaro, *Young Woman Playing the Shamisen* (detail), about 1804–06, ink, color, and gold on silk, Fenollosa-Weld Collection, 11.4642
Photograph © 2017 Museum of Fine Arts, Boston

July 20 (Thu) – October 9 (Mon-holiday)

The exhibition will feature 80 masterpieces from the Museum of Fine Arts, Boston, one of the world's most distinguished museums. Its renowned collection is the result of peerless private philanthropy by great donors and collectors. This exhibition will cast light on them. Works from across time and around the globe are included from the MFA's celebrated collections of ancient Egyptian, Chinese, and Japanese art, and its remarkable collections of French, American, and Contemporary paintings, prints, and photographs.

◎Thematic Exhibition

Hiroshi Sugito

July 25 (Tue) – October 9 (Mon-holiday)

Simple motifs—trees, houses, and curtains—and geometric forms. Delicate, rhythmically placed colors. The works of Hiroshi Sugito (1970-) commute between the abstract and figurative and work magic on people all over the world. This will be the artist's first solo exhibition at a Tokyo art museum. We invite you to enjoy Sugito's most recent works in our large underground-level, void gallery space, with walls and floors displaying the special qualities of Kunio Mayekawa's architecture.



Hiroshi Sugito, *Gekkoso color test*, 2016, Watercolor, Collection of the artist

◎Special Exhibition

Van Gogh and Japan



Vincent van Gogh, *Sower*, 1888, Oil on canvas, Van Gogh Museum, Amsterdam
© Van Gogh Museum, Amsterdam (Vincent van Gogh Foundation)

October 24 (Tue) – January 8 (Mon-holiday)

In his Paris and early Arles periods, Vincent Van Gogh (1853-1890) felt a strong interest in Japan and collected ukiyo-e and literature about Japanese culture. After Van Gogh's death, Japanese artists and intellectuals—enamored by Van Gogh and his work—made pilgrimages to his grave in Auvers-sur-Oise in France. This exhibition explores the mutual fascination between Van Gogh and Japan through the artist's oil paintings, sketches, and other related materials and looks at the magical appeal this subject holds for people today.

Ueno Artist Project: "Contemporary Realism
—Transcending the Photograph and Video"

November 17 (Fri) – January 6 (Sat)

SHIOTANI Ryo, *Orni in Late Spring*, 2016, Oil on canvas, Private Collection



The Tokyo Metropolitan Art Museum—"the home of the public entry exhibition" will launch the "Ueno Artist Project," an exhibition series featuring contemporary artists who are currently active in art groups, under a fixed theme each time. Part one of the series takes the theme, "Contemporary Realism—Transcending the Photograph and Video." In today's society, with its flood of digital imagery, the exhibition will feature artists who are sincerely pursuing "contemporary realism" that is only possible in paintings.

From the MOT Collection: "Modern Realism"



KONO Michiei, *Oak Leaves*, 1917, watercolor on paper, Museum of Contemporary Art Tokyo

November 17 (Fri) – January 6 (Sat)

Featuring realistic Western-style paintings of the Meiji (1868-1912), Taisho (1912-26), and Showa (1926-89) periods from the collection of the Museum of Contemporary Art Tokyo (MOT). Kinkichiro Honda of the Meiji-period, Michiei Kono of the Taisho-period, Torao Makino in the early Showa period...These and other Western-style painters who propelled Japanese art and art groups will be presented in the exhibition of modern-period realistic painting.

◎Special Exhibition

The Bruegel Dynasty (tentative)

January 23 (Tue) – April 1 (Sun)

The Bruegel family produced five generations of artists during 150 years. The first, Pieter Bruegel the Elder, is the foremost name in 16th-century Flemish painting. This exhibition will trace that lineage and highlight the beauty and appeal of Flemish art through landscape paintings, genre paintings, and still lifes of flowers by artists of the Bruegel dynasty.

The exhibition will consist of some 100 works, many of them from private collections and rarely seen in public.



Jan Brueghel the Elder, Jan Brueghel the Younger, *Still Life of Tulips and Roses in a Glass Vase Resting on a Table*, ca.1615-20, Oil on Panel, Private Collection, Zurich

Library and Archives

Visitors are invited to use the Library for reading general art catalogues and magazines and exhibition catalogues. The Library's permanently stocked materials include some 45,000 books and other materials and some 1,200 archival materials related to the Museum's history.

Services provided: Reference materials, Copying of documents



Architecture Tour

The Museum would like visitors to enjoy the museum building, itself, as well as its exhibitions. From this thought, the Architecture Tour was born. Guided by "Tobira", the tours take visitors on strolls around the building. Tour guides give play to their knowledge and humor to make each and every tour a unique experience.

*The Architecture Tour is in Japanese only.

*Please see a website for details.

