

# •Visitor Information

[Museum Hours] 9:30–17:30

\*Open 9:30–20:00 on Fridays during Special Exhibitions and also on November 1, 2, December 6, 13 and 14.

\*Open 9:30–21:00 on Fridays from July 25 to September 19 and every day from August 12 to 17.

\*On the final day of “Group Show of Contemporary Artists 2014” only, the museum will be open from 9:30–13:30.

\*The first day of “TOKYO “SHO” 2015” and “Collection Exhibition” is 13:30–17:30.

\*In all cases, admission ends 30 min. before closing.

[Closed]

Special exhibitions, thematic exhibitions: Mondays

All other exhibitions: 1st & 3rd Mondays of month

\*If a national holiday, open Monday and closed the following Tuesday instead.

[Entire museum closed]

1st & 3rd Mondays of month (Open when Monday is a national holiday, closed the following day instead).

For reinstallation or maintenance: July 7–15, December 21–28

Year-end Holidays: December 29–January 3

## •Facility Guide

Closed when entire museum is closed.

Library and Archives (Intercommunication Building 1F) 10:00–17:00

\*Closed for maintenance September 24–October 5

Museum Shop (Main Building LBF) 9:30–17:30\*

Restaurant “MUSEUM TERRACE” (Main Building 2F) 11:00–17:30\*

Restaurant “IVORY” (Intercommunication Building 1F) 11:00–17:30\*

Café “M café” (Main Building 1F) 10:00–17:30\*

\*Open until 20:00 on Fridays during Special Exhibitions only.

Official Website <http://www.tobikan.jp>

Official Twitter Account @tobikan\_jp

Facebook TokyoMetropolitanArtMuseum



8-36 Ueno-Koen Taito-ku, TOKYO 110-0007 Tel.03-3823-6921 <http://www.tobikan.jp>

Published: October 1, 2014 Design: Kazuya Kondo Printed: Onoue Print, Inc.

Published: Tokyo Metropolitan Art Museum (Tokyo Metropolitan Foundation for History and Culture)

©2014 Tokyo Metropolitan Art Museum

## ©Exhibition Calendar | 2014.4.1→2015.3.31

2014

4 APR

S M T W T F S

1 2 3 4 5

6 7 8 9 10 11 12

13 14 15 16 17 18 19

20 21 22 23 24 25 26

27 28 29 30

5 MAY

S M T W T F S

1 2 3

4 5 6 7 8 9 10

11 12 13 14 15 16 17

18 19 20 21 22 23 24

25 26 27 28 29 30 31

6 JUN

S M T W T F S

1 2 3 4 5 6 7

8 9 10 11 12 13 14

15 16 17 18 19 20 21

22 23 24 25 26 27 28

29 30

Balthus: A Retrospective

April 19 (Sat)–June 22 (Sun)

Best Selection 2014

May 4 (Sun-holiday)–27 (Tue)

10 OCT

S M T W T F S

1 2 3 4

5 6 7 8 9 10 11

12 13 14 15 16 17 18

19 20 21 22 23 24 25

26 27 28 29 30 31

11 NOV

S M T W T F S

1 2 3 4 5 6 7 8

9 10 11 12 13 14 15

16 17 18 19 20 21 22

23 24 25 26 27 28 29

30

12 DEC

S M T W T F S

1 2 3 4 5 6

7 8 9 10 11 12 13

14 15 16 17 18 19 20

21 22 23 24 25 26 27

28 29 30 31

Arte a Firenze da Botticelli a Bronzino: verso una ‘maniera moderna’

October 11 (Sat)–December 14 (Sun)

Group Show of Contemporary Artists 2014

November 26 (Wed)–January 10 (Sat)

7 JUL

S M T W T F S

1 2 3 4 5

6 7 8 9 10 11 12

13 14 15 16 17 18 19

20 21 22 23 24 25 26

27 28 29 30 31

8 AUG

S M T W T F S

1 2

3 4 5 6 7 8 9

10 11 12 13 14 15 16

17 18 19 20 21 22 23

24 25 26 27 28 29 30

31

- Entire Museum Closed: 1st & 3rd Mondays, and year-end holidays.
- Special Exhibitions, Thematic Exhibitions Closed: Mondays
- Days of Extended Hours: 9:30–20:00
- Days of Special Extended Hours: 9:30–21:00
- \*Day Nursery Service: 13:00–museum closing.

Ancient Egyptian Queens and Goddesses:

July 19 (Sat)–September 23 (Tue-holiday)

Art as a Haven of Happiness

July 26 (Sat)–October 8 (Wed)

2015

1 JAN

S M T W T F S

1 2 3

4 5 6 7 8 9 10

11 12 13 14 15 16 17

18 19 20 21 22 23 24

25 26 27 28 29 30 31

2 FEB

S M T W T F S

1 2 3 4 5 6 7

8 9 10 11 12 13 14

15 16 17 18 19 20 21

22 23 24 25 26 27 28

29 30

3 MAR

S M T W T F S

1 2 3 4 5 6 7

8 9 10 11 12 13 14

15 16 17 18 19 20 21

22 23 24 25 26 27 28

29 30 31

TOKYO “SHO” 2015

January 4 (Sun)–16 (Fri)

Collection Exhibition

January 4 (Sun)–23 (Fri)

Neo-impressionism, from light to color

January 24 (Sat)–March 29 (Sun)

New-wave Artists 2015

February 19 (Thu)–March 15 (Sun)

## アート コミュニケーション プログラム

### Art Communication Programs

Tokyo Metropolitan Art Museum offers a variety of participation-type programs that promote communication through art.

\*Please see the museum’s website for details concerning participation.



Exhibition Junior Guide

### Community



Illustrated by Mai Kuriyagawa (STUBBIE DESIGN)

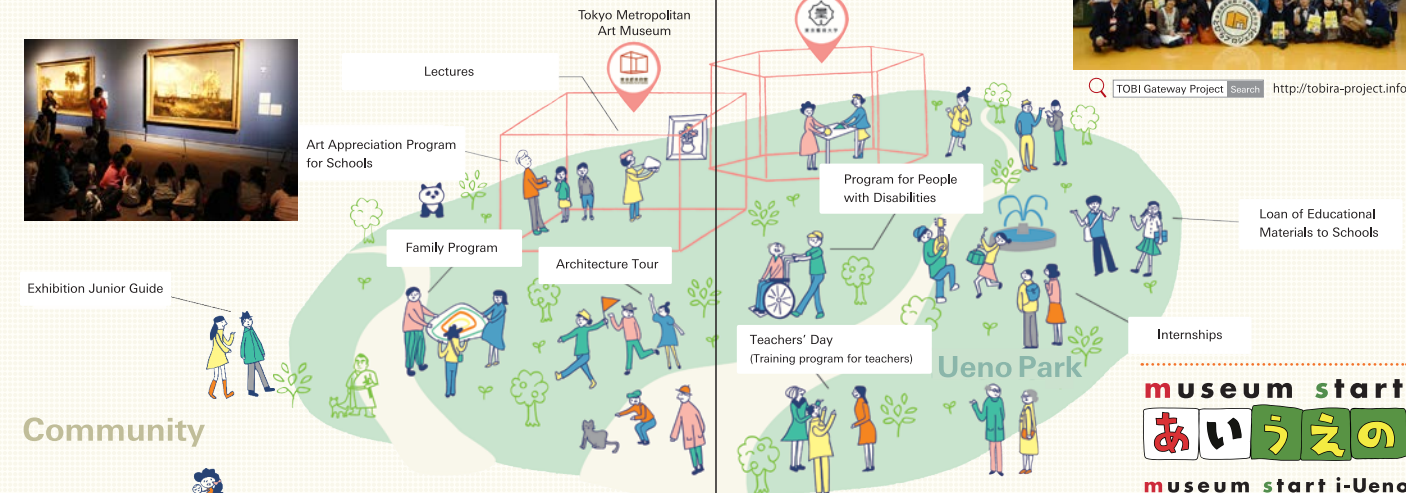


## 東京都美術館 × 東京藝術大学 とびらプロジェクト TOBI Gateway Project

Operated in conjunction with Tokyo University of the Arts, the TOBI Gateway Project is aimed at building an open community through the arts. Art communicators (“TOBIRAs”) selected through public application engage in activities with curators and university teachers, and help connect people with artworks, places, and other people.



TOBI Gateway Project Search <http://tobira-project.info>



The cultural facilities in Ueno Park have linked up to support children in their “museum debut.” This is a “Learning Design Project” of creating an environment where children and adults can learn together. Programs for the participation of elementary, junior high and high school students are available throughout the year.

\*This project is organized as part of Tokyo Culture Creation Project.

Organizers: Tokyo Metropolitan Government, Tokyo Metropolitan Art Museum, Tokyo Culture Creation Project

Office (Tokyo Metropolitan Foundation for History and Culture), Tokyo University of the Arts

i-Ueno Search <http://museum-start.jp>





◎Special Exhibition  
Balthus: A Retrospective

2014/4→6  
APR JUN



Thérèse Dreaming 1938 The Metropolitan Museum of Art, NY  
Jacque and Natasha Gelman Collection, 1998 (1999.363.2). Photo: Malcolm Varon.  
©The Metropolitan Museum of Art. Image source: Art Resource, NY

April 19 (Sat) – June 22 (Sun)

The first posthumous retrospective in Japan devoted to Balthus (1908–2001), an artist called the last maestro of the 20th century. Featured will be oil paintings, drawings, and personal belongings from the collections of art museums and individuals around the world—including the acclaimed work in oils, *Thérèse Dreaming*. The exhibition will also reconstruct Balthus's atelier as it is preserved today in his Swiss chalet and explore the background of the artist's work.

Best Selection 2014

5  
MAY

May 4 (Sun-holiday) – May 27 (Tue)

A cooperative exhibition by 27 selected major art groups and associations in Japan. Through works of various genres by “151 artists now in their prime,” including Nihonga (Japanese-style Painting), Youga (Western-style Painting), sculpture, print, craft, and watercolor, the exhibition will demonstrate the power and appeal of the “art groups’ public entry exhibition.”



Yoko Furusawa (Nitten)  
Wave of Houses Continuing into the Future 2012

◎Special Exhibition  
Ancient Egyptian Queens and Goddesses:  
Treasures from The Metropolitan Museum of Art,  
New York

7→9  
JUL SEP

July 19 (Sat) – September 23 (Tue-holiday)

The first comprehensive exhibition of works from the ancient Egyptian art collection at New York's Metropolitan Art Museum, one of the world's three largest art museums. Some 200 treasures selected under the theme, “Queen and Goddess,” will make their first public appearance in Japan.



Head from an Osiride Statue of Hatshepsut  
Image©The Metropolitan Museum of Art

◎Thematic Exhibition  
Art as a Haven of Happiness

7→10  
JUL OCT

July 26 (Sat) – October 8 (Wed)

Artworks whose exquisite harmonies and rich colors mesmerize viewers, by artists born with Down syndrome. Through some 100 art gems created at the studios of Atelier Élément Présent and Shobu Gakuen, the exhibition will create a place for discovery of the “meaning and potential of art.”



Yo Fukuyuki (Atelier Élément Présent), *Blue-blue-blue*, 2013  
©Atelier Élément Présent

◎Special Exhibition  
Arte a Firenze da Botticelli a Bronzino:  
verso una ‘maniera moderna’

10→12  
OCT DEC



October 11 (Sat) – December 14 (Sun)

Florence, once the world's art capital, fostered numerous splendid artists in the 15th and 16th centuries and built a golden age of Italian art. From the collection of the world-famed Uffizi Gallery in Florence, this exhibition will present some 80 works with a focus on the Renaissance master Sandro Botticelli and convey the essence of the Florentine Renaissance.

Sandro Botticelli, *Pallas and Centaur* c.1482-83,  
Uffizi Gallery, Florence  
FOTO: S.S.P.S.A.E e per il Polo Museale della città di Firenze -  
Gabinetto Fotografico

Group Show of Contemporary Artists 2014

11→1  
NOV JAN

\*Closes at 13:30 on final day (Admission ends 30 min. before closing)

November 2014 – January 2015

A group exhibition by contemporary artists exploring new art forms, whose works give full play to this museum's exhibit spaces. Six groups chosen in juring in 2014 will be featured.



CHAIN REACTION (Installation view of Group Show of Contemporary Artists 2013)  
Photo: tada (YUKAI)

1 Mayhem, Friction, Silence,  
and then ... POST 3.11  
November 26 (Wed) – December 7 (Sun)



Eisaku Ando  
*Pupa of blaze*  
2013

2 Monday through Sunday,  
“heart to the color”  
November 26 (Wed) – December 7 (Sun)



Miho Katsuragawa  
*7 feelings and the view of a day*  
2012

3 Ezotic Caravan  
—From the far north of Japan  
December 5 (Fri) – December 20 (Sat)



5 Unfolding of the WORDS  
December 9 (Tue) – December 20 (Sat)



Tomonori Kobayashi  
*Unfolding of the Sho-STUDY 1*  
2014

4 what may be different to see  
through THE WINDOWS  
December 9 (Tue) – December 20 (Sat)



Sho Sato  
*Black Hole Down!*  
2012

6 TENSAI High School!!!!  
+ nao nakamura “Drift”  
January 4 (Sun) – January 10 (Sat)



TENSAI High School !!!!  
installation view of “YAMAMOTO GENDAI Future  
Feature Vol.6 TENSAI High School !!!!, ‘TENSAI High  
School’,” at YAMAMOTO GENDAI,  
2013

TOKYO “SHO” 2015: Japanese Calligraphy  
Today

2015/1  
JAN

\*January 4 (Sun) is 13:00-17:30

January 4 (Sun) – January 16 (Fri)

A cooperative exhibition by 18 calligraphy groups of the public entry exhibition based in the Tokyo-Kanto area. 38 artists chosen by each group as representing the “rising generation of calligraphers.” Contemporary calligraphy of many genres—Kanji, Kana, Modern Poetic Calligraphy, Large Character Calligraphy, and Avant-Garde Calligraphy—will be presented in one venue, with a focus on recent works, to demonstrate the power and beauty of “Tokyo Calligraphy Today.”



TOKYO “SHO” 2014 exhibition view. Photo: tada (YUKAI) Collection Exhibition January 4 (Sun) – 23 (Fri)

◎Special Exhibition  
Neo-impressionism, from light to color

2015/1→3  
JAN MAR

January 24 (Sat) – March 29 (Sun)

“Neo-impressionism”—a painting style that evolved as a logical consequence of Impressionism. The pointillism and pure color techniques of Georges Seurat and Paul Signac imparted a lasting influence on later avant-garde artists. This exhibition will trace Neo-impressionism's development from its birth to Henri Matisse and the color expression of artists in the early 20th century, through masterworks gathered from throughout the world.



Georges Seurat, *The Seine at Courbevoie*,  
1885 (private collection) ©Droit Réserve

New-wave Artists 2015  
— From the Public Entry Exhibition

2→3  
FEB MAR

February 19 (Thu) – March 15 (Sun)

An exhibition introducing 3 to 5 up-and-coming artists of great promise, selected from among artists appearing in “Best Selection 2014.” Visitors can look forward to artworks infused with powerful individuality.



“New-wave Artists 2014—From the Public Entry Exhibition” exhibition view

Day Nursery Service

A Day Nursery Service is available to people using Tokyo Metropolitan Art Museum and Ueno Park cultural facilities.

\*Please see our calendar (back side) for details concerning days available.

Hours: 13:00–closing (on days available)

Day care period: Once per day, maximum 3 hours

\*There is a user-charge. A prior reservation is required in principle.



Reservations and inquiries:  
Mother's Inc. Tel.0120-788-222 (Weekdays 10:00–12:00 / 13:00–17:00)