

Visitor Information

[Museum Hours] 9:30–17:30

*Open 9:30–20:00 on Fridays only when special exhibitions are in progress.
Please see a “Exhibition Calendar” for details.

*The first day of “TOKYO “SHO” 2017” and “Collection Exhibition” is 13:30–17:30.

*In all cases, admission ends 30 min. before closing.

[Closed]

Special exhibitions, thematic exhibitions: Mondays

All other exhibitions: 1st & 3rd Mondays of month

*If a national holiday, open Monday and closed the following Tuesday instead.

[Entire museum closed]

1st & 3rd Mondays of month (Open when Monday is a national holiday, closed the following day instead).

For reinstallation or maintenance: December 21–28

Year-end Holidays: December 29–January 3

Facility Guide

Closed when entire museum is closed.

Library and Archives (Intercommunication Building 1F) 10:00–17:00

*Closed for maintenance: Please see a website for details.

Museum Shop (Main Building LBF) 9:30–17:30*

Restaurant “MUSEUM TERRACE” (Main Building 2F) 11:00–17:30*

Restaurant “IVORY” (Intercommunication Building 1F) 11:00–17:30*

Cafe “Mcafe” (Main Building 1F) 10:00–17:30

*Open until 20:00 on Fridays during Special Exhibitions only.

Please see a website for details.

Official Website <http://www.tobikan.jp/en/>

Official Twitter Account @tobikan_jp

Facebook TokyoMetropolitan Art Museum



8-36 Ueno-Koen Taito-ku, TOKYO 110-0007 Tel.03-3823-6921 <http://www.tobikan.jp/en/>

Published: March 15, 2016 Design: Kazuya Kondo Printed: Mitsumura Printing Co., Ltd.
Published: Tokyo Metropolitan Art Museum (Tokyo Metropolitan Foundation for History and Culture)
©2016 Tokyo Metropolitan Art Museum

Exhibition Calendar | 2016.4.1→2017.3.31

2016

4 APR

S	M	T	W	T	F	S
					①	2
3	4	5	6	7	8	9
10	11	12	13	14	15	16
17	18	19	20	21	22	23
24	25	26	27	28	29	30

5 MAY

S	M	T	W	T	F	S
1	2	3	4	5	⑥	7
8	9	10	11	12	13	14
15	16	17	18	19	20	21
22	23	24	25	26	27	28
29	30	31				

6 JUN

S	M	T	W	T	F	S
					1	2
3	4	5	6	7	8	9
10	11	12	13	14	15	16
17	18	19	20	21	22	23
24	25	26	27	28	29	30

7 JUL

S	M	T	W	T	F	S
					①	2
3	4	5	6	7	8	9
10	11	12	13	14	15	16
17	18	19	20	21	22	23
24	25	26	27	28	29	30

8 AUG

S	M	T	W	T	F	S
1	2	3	4	⑤	6	
7	8	9	10	11	12	13
14	15	16	17	18	19	20
21	22	23	24	25	26	27
28	29	30	31			

9 SEP

S	M	T	W	T	F	S
					1	2
3	4	5	6	7	8	9
10	11	12	13	14	15	16
17	18	19	20	21	22	23
24	25	26	27	28	29	30

31

The 300th Anniversary of his Birth: Jakuchu
April 22 (Fri) – May 24 (Tue)

Best Selection 2016
May 4 (Wed-holiday) – 27 (Fri)

Masterpieces from the Centre Pompidou: Timeline 1906–1977
June 11 (Sat) – September 22 (Thu-holiday)

Tokyo Metropolitan Art Museum's 90th Anniversary Exhibition
July 26 (Tue) – October 2 (Sun)

10 OCT

S	M	T	W	T	F	S
						1
2	③	4	5	6	7	8
9	10	11	12	13	14	15
16	17	18	19	20	21	22
23	24	25	26	27	28	29
30	31					

11 NOV

S	M	T	W	T	F	S
		1	②	③	④	⑤
6	7	8	9	10	11	12
13	14	15	16	17	18	19
20	21	22	23	24	25	26
27	28	29	30			

12 DEC

S	M	T	W	T	F	S
					1	②
3	4	5	6	7	8	9
10	11	12	13	14	15	16
17	18	19	20	21	22	23
24	25	26	27	28	29	30
31						

2017

1 JAN

S	M	T	W	T	F	S
①	2	③	4	5	6	7
8	9	10	11	12	13	14
15	16	17	18	19	20	21
22	23	24	25	26	27	28
29	30	31				

2 FEB

S	M	T	W	T	F	S
				1	2	③
4	5	6	7	8	9	10
11	12	13	14	15	16	17
18	19	20	21	22	23	24
25	26	27	28	29	30	31

3 MAR

S	M	T	W	T	F	S
					1	2
3	4	5	6	7	8	9
10	11	12	13	14	15	16
17	18	19	20	21	22	23
24	25	26	27	28	29	30
31						

Van Gogh and Gauguin: Reality and Imagination
October 8 (Sat) – December 18 (Sun)

Group Show of Contemporary Artists 2016
November 26 (Sat) – December 18 (Sun)

Collection Exhibition
January 4 (Wed) – 23 (Mon)
TOKYO “SHO” 2017
January 4 (Wed) – 15 (Sun)

Titian and the Renaissance Venice
January 21 (Sat) – April 2 (Sun)

New-wave Artists 2017
February 19 (Sun) – March 15 (Wed)

アート コミュニケーション プログラム

Art Communication Programs

Tokyo Metropolitan Art Museum offers a variety of participation-type programs that promote communication through art.

*Please see the museum's website for details concerning participation.



Exhibition Junior Guide

Community



Illustrated by Mai Kuriyagawa (STUBBE DESIGN)



東京都美術館 × 東京藝術大学
とびらプロジェクト

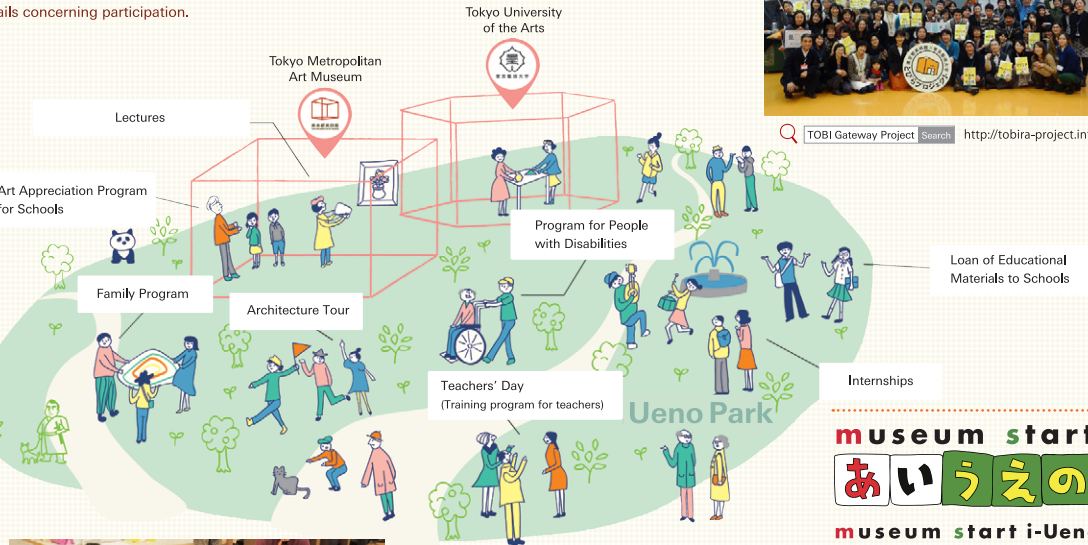
TOKYO METROPOLITAN ART MUSEUM ×
TOKYO UNIVERSITY OF THE ARTS

TOBI Gateway Project

Operated in conjunction with Tokyo University of the Arts, the TOBI Gateway Project is aimed at building an open community through the arts. Art communicators (“TOBIRAS”) selected through public application engage in activities with curators and university teachers, and help connect people with artworks, places, and other people.



TOBI Gateway Project Search <http://tobira-project.info>



museum start
あいうえの
museum start i-Ueno

The cultural facilities in Ueno Park have linked up to support children in their “museum debut.” This is a “Learning Design Project” of creating an environment where children and adults can learn together. Programs for the participation of elementary, junior high and high school students are available throughout the year.

*This project is organized as part of Arts Council Tokyo.

Organizers: Tokyo Metropolitan Government, Tokyo Metropolitan Art Museum, Arts Council Tokyo (Tokyo Metropolitan Foundation for History and Culture), Tokyo University of the Arts

i-Ueno Search <http://museum-start.jp>

ENGLISH

TOKYO METROPOLITAN
ART MUSEUM | CALENDAR

2016.4→
2017.3

◎Special Exhibition

The 300th Anniversary of
his Birth: Jakuchu

2016 / 4→5
APR MAY



April 22 (Fri) – May 24 (Tue)

To commemorate the 300th anniversary of the birth of Ito Jakuchu (1716-1800), important works from all stages of Jakuchu's career will be presented. Among them, the 3 scroll paintings of the *Sakyamuni Triad* and 30 scroll paintings of *The Colorful Realm of Living Beings* (The Museum of the Imperial Collections)—works created as a personal offering to Shokokuji Temple—will be shown together in Tokyo for the first time. The exhibition will explore the life and work of Ito Jakuchu, one of Japan's most remarkable artists, whose popularity has soared in recent years.

ITO Jakuchu, *The Colorful Realm of Living Beings: White Phoenix and Old Pine*, The Museum of the Imperial Collections

◎Special Exhibition

Masterpieces from the Centre Pompidou:
Timeline 1906-1977

6→9
JUN SEP

June 11 (Sat) – September 22 (Thu-holiday)

The Centre Pompidou, in the heart of Paris, is famous for its gem-like collection of modern and contemporary. This exhibition will trace a timeline from 1906 to 1977 by selecting one work by one artist for each year from the Pompidou's collection. The exhibition, which will include Henri Matisse's bold, late-period oil painting, *Large Red Interior*, will survey French 20th-century art by means of a diverse lineup of artists.



Matisse Henri, *Grand intérieur rouge*, printemps 1948
Photo: Bertrand Prévost - Centre Pompidou, MNAM-CCI

◎Special Exhibition

Van Gogh and Gauguin: Reality and
Imagination

10→12
OCT DEC



Vincent van Gogh, *Gauguin's Chair*, 1888
Van Gogh Museum, Amsterdam (Vincent van Gogh Foundation)
©Van Gogh Museum, Amsterdam (Vincent van Gogh Foundation)

October 8 (Sat) – December 18 (Sun)

While deeply influenced by the Impressionist painters in Paris, Vincent Van Gogh (1853-1890) and Paul Gauguin (1848-1903) both established highly individual styles of their own. Taking as a focal point the two artists' cohabitation in Arles, southern France, which came about at Van Gogh's urging, this exhibition will trace the transitions in their friendship and the development of their art in the period leading up to Arles, as well as in the influences visible in their work thereafter.

Best Selection 2016

5
MAY



[Kokugakai] INOUE Satoru, *Complicated Idea*, 2014

May 4 (Wed-holiday) – May 27 (Fri)

A cooperative exhibition by 27 selected major art groups and associations in Japan. Through works of various genres by 151 artists now in their prime, including Nihonga (Japanese-style Painting), Yōga (Western-style Painting), sculpture, print, watercolor and craft, the exhibition will demonstrate the power and appeal of the "art groups' public entry exhibition."

◎Thematic Exhibition

Tokyo Metropolitan Art Museum's
90th Anniversary Exhibition

7→10
JUL OCT

July 26 (Tue) – October 2 (Sun)

An exhibition composed of artworks that complexly embrace ambivalent elements: sacred and profane, eternal and fleeting, and life and death. Through large-scale installations and sculptures giving play to wood as a medium, viewers will experience the worlds of some of contemporary Japan's foremost artists.



TSUCHIYA Yoshimasa, *Aries*, 2012
Photo: TAKENOUCHI Hiroyuki

Group Show of Contemporary Artists 2016

11→12
NOV DEC

November 26 (Sat) – December 18 (Sun)

A group exhibition of artists exploring new directions in contemporary art. The work of five groups spanning the genres of painting, sculpture, crafts, and installation will be featured.



Mayhem, Friction, Silence, and then... POST 3.11
(Installation view of Group Show of Contemporary Artists 2014)
Photo: tada (YUKAI)

1 Newly think

Group: Monday through Sunday

November 26 (Sat) – December 6 (Tue)



TSUTAJIMA, Kaoru, *COLOR - Play-*, 2014

2 Kyō no Dōki

Group: Steering committee of "Kyō no Dōki"

November 26 (Sat) – December 6 (Tue)



NAGASAWA, Akira, *MOTHER*, 2015

3

The Mainstream of Nihonga – 11 knights of the Brush at the Vanguard of Nihonga –

Group: Association for Study of the Japanese-style Paintings (ASJP)

December 6 (Tue) – December 18 (Sun)



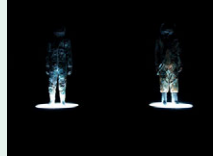
YONEDA, Minori, *wish of flowers*, 2015
ARAKI, kyoko, *The vase on the table*, 2015
HIROSE, Takahiro, *In the milky way*, 2015
IWATA, Sohei, *I remember you especially when snow, the moon or flowers are Beautiful ~stealing flowers*, 2014

4

KAMIGAMI – Paper is a God –

Group: MITSUMATA

December 9 (Fri) – December 18 (Sun)



ADACHI, Atsushi, *REISEN*, 2012

5

MUZINZO

Group: ∞3 (Infinity 3)

December 9 (Fri) – December 18 (Sun)



CHANG, Yih-Ming, *Seed of Bright World*, 2014

TOKYO "SHO" 2017: Japanese Calligraphy
Today

2017 / 1
JAN

*January 4 (Wed) is 13:00-17:30



TOKYO "SHO" 2016 exhibition view
Photo: Ichiro Otani

January 4 (Wed) – 15 (Sun)

A cooperative exhibition by 18 public calligraphy groups based in the Tokyo-Kanto area. Featured are some 40 artists chosen by each group as representing the "rising generation of calligraphers." Contemporary calligraphy of many genres—Kanji, Kana, Modern Poetic Calligraphy, Large Character Calligraphy, Seal Engraving, Carved Characters and Avant-garde Calligraphy—will be presented in one venue, with a focus on recent works, to demonstrate the power and beauty of "Tokyo Calligraphy Today."

[Collection Exhibition January 4 (Wed) – 23 (Mon)]

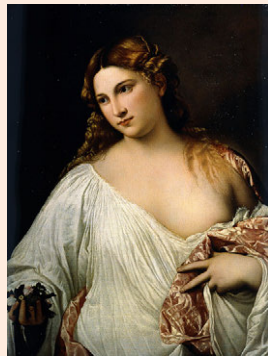
◎Special Exhibition

Titian and the Renaissance Venice

2017 / 1→4
JAN APR

January 21 (Sat) – April 2 (Sun)

Venice, City of Water, prospered through maritime trade in the 15th and 16th centuries and entered a golden age of art. This exhibition will examine the characteristics and compelling allure of Venetian Renaissance art through paintings by Titian and other artists of the Venetian school.



Tiziano Vecellio, *Flora*, ca. 1515, Galleria degli Uffizi
©2016. Photo Scala, Florence-courtesy of the Ministero Beni e Att. Culturali

New-wave Artists 2017
— From the Public Entry Exhibition

2→3
FEB MAR

February 19 (Sun) – March 15 (Wed)

An exhibition introducing up-and-coming artists of great promise, selected from among artists appearing in "Best Selection 2016" and exhibited in solo exhibition format. Visitors can look forward to artworks infused with powerful individuality.



"New-wave Artists 2015—From the Public Entry Exhibition" exhibition view
Photo: tada (YUKAI)

Day Nursery Service

A Day Nursery Service is available to people using Tokyo Metropolitan Art Museum and Ueno Park cultural facilities.

*Please see a website for details concerning days available.

Hours: 13:00–closing (on days available)

Day care period: Once per day, maximum 3 hours

*There is a user-charge. A prior reservation is required in principle.



Reservations and inquiries: Mother's Inc.
Tel.0120-788-222 (Weekdays 10:00–12:00/13:00–17:00)